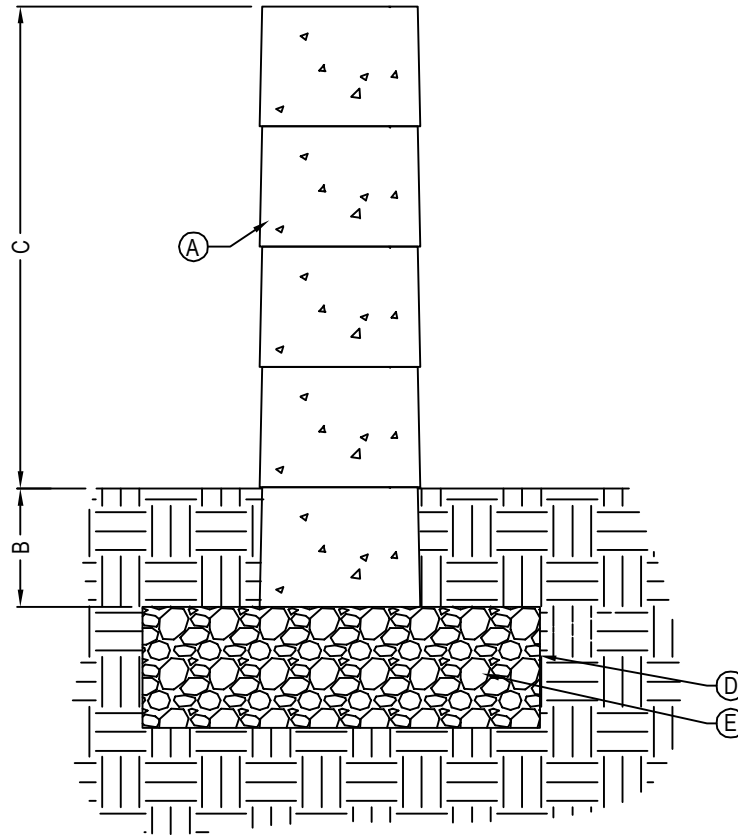




TECHO-BLOC
 5255 ALBERT-MILLICHAMP
 ST-HUBERT, QC J3Y 8Z8
 TOLL FREE: 1-877-832-4625
 www.techo-bloc.com



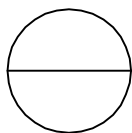
SECTION

LEGEND:

- (A) RÖCKA DOUBLE-SIDED WALL UNITS SECURE EACH ROW WITH CONCRETE ADHESIVE
- (B) EMBEDMENT DEPTH, 6" (150 MM) MIN.
- (C) 24" (612 MM) MAX.
- (D) GEOTEXTILE
- (E) COMPACTED GRANULAR LEVELING PAD, 6" (150 MM) THICK MIN. THICKNESS ACCORDING TO PROJECT SPECIFIC CONDITIONS

NOTES:

1. INSTALLATION TO BE COMPLETED IN ACCORDANCE WITH MANUFACTURER'S SPECIFICATIONS.
2. DO NOT SCALE DRAWING.
3. THIS DRAWING IS INTENDED FOR USE BY ARCHITECTS, ENGINEERS, CONTRACTORS, CONSULTANTS AND DESIGN PROFESSIONALS FOR PLANNING PURPOSES ONLY. THIS DRAWING MAY NOT BE USED FOR CONSTRUCTION.
4. ALL INFORMATION CONTAINED HEREIN WAS CURRENT AT THE TIME OF DEVELOPMENT BUT MUST BE REVIEWED AND APPROVED BY THE PRODUCT MANUFACTURER TO BE CONSIDERED ACCURATE.
5. CONTRACTOR'S NOTE: FOR PRODUCT AND COMPANY INFORMATION VISIT www.CADdetails.com/info AND ENTER REFERENCE NUMBER 5058-035.



FREESTANDING WALLS

FREESTANDING WALLS: RÖCKA